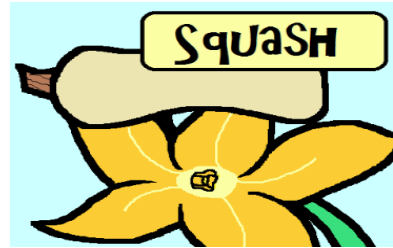


Amoeba Sisters Video Recap of Flowering Plant Reproduction

1. What **characteristics** are common in **angiosperms**?



2. A topic emphasized in this clip is that not all **fruits** are sweet or even edible. Every plant that forms a flower must have a fruit. How would you define a "fruit"? How can fruits be helpful in **seed dispersal**?



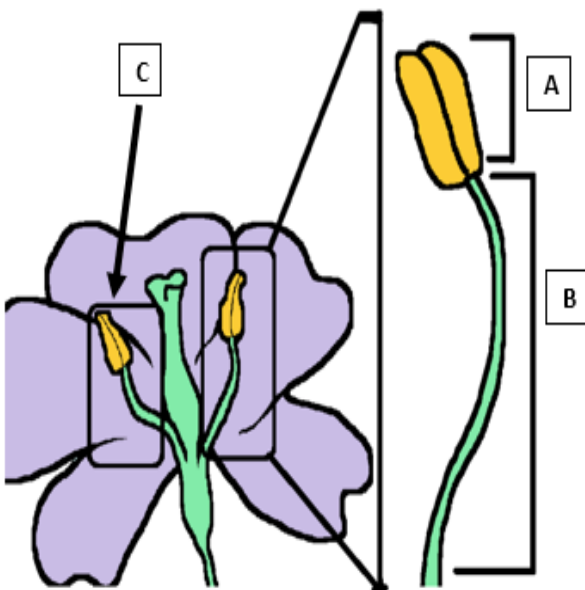
3. Flowers can contain one or both genders of **flower parts**. Label A, B, and C.

A is the _____.

B is the _____.

C is the _____.

All of these are which **gender**? _____



4. Flowers can contain one or both genders of **flower parts**. Label D, E, F, and G.

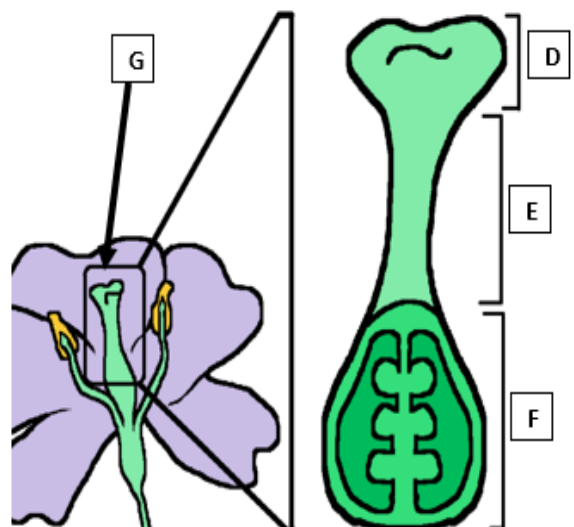
D is the _____.

E is the _____.

F is the _____.

G is the _____.

All of these are which **gender**? _____



Narrate Pollination and Double Fertilization in Angiosperms

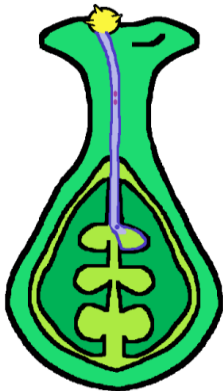
The pictures are in order, but it's your turn to briefly narrate pollination and fertilization using the pictures. You must use all of the following words at least once (they are in random order): **pollinator**, **seed**, **ovary**, **ovule**, **zygote**, **double fertilization**, **sperm cell(s)**, **stigma**, **pollen**, **anther**, **pollen tube**, **endosperm**, and **fruit**. Cross the words off to help you keep track of usage.

5. Pollination



Brief Description:

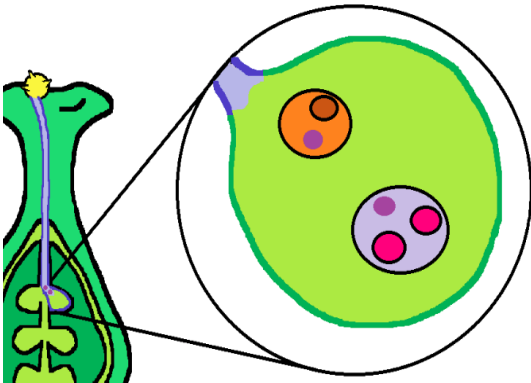
6. Pollen Tube Germination



Brief Description:

7. Fertilization

INSIDE OVULE



Brief Description:

