

La Vega ECHS: Making It Work for Academic and CTE Preparation



Elicia Krumnow, La Vega ISD

elicia.krumnow@lavegaisd

Joyce Cole, La Vega ISD

joyce.cole@lavegaisd.org

Londa Carriveau, McLennan Community College

lcarriveau@mclennan.edu

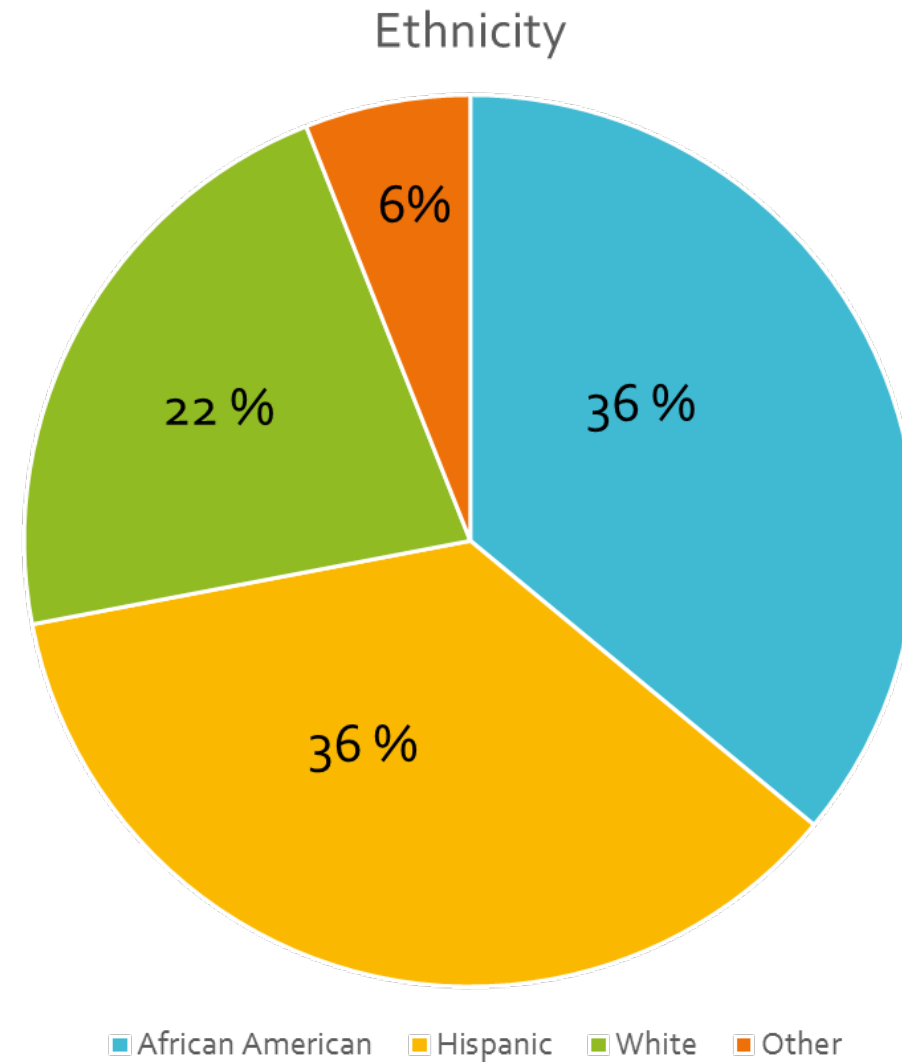
Clarisa Delafuente, Texas State Technical College

clarisa.delafuente@tstc.edu

Demographics

Cohort 1

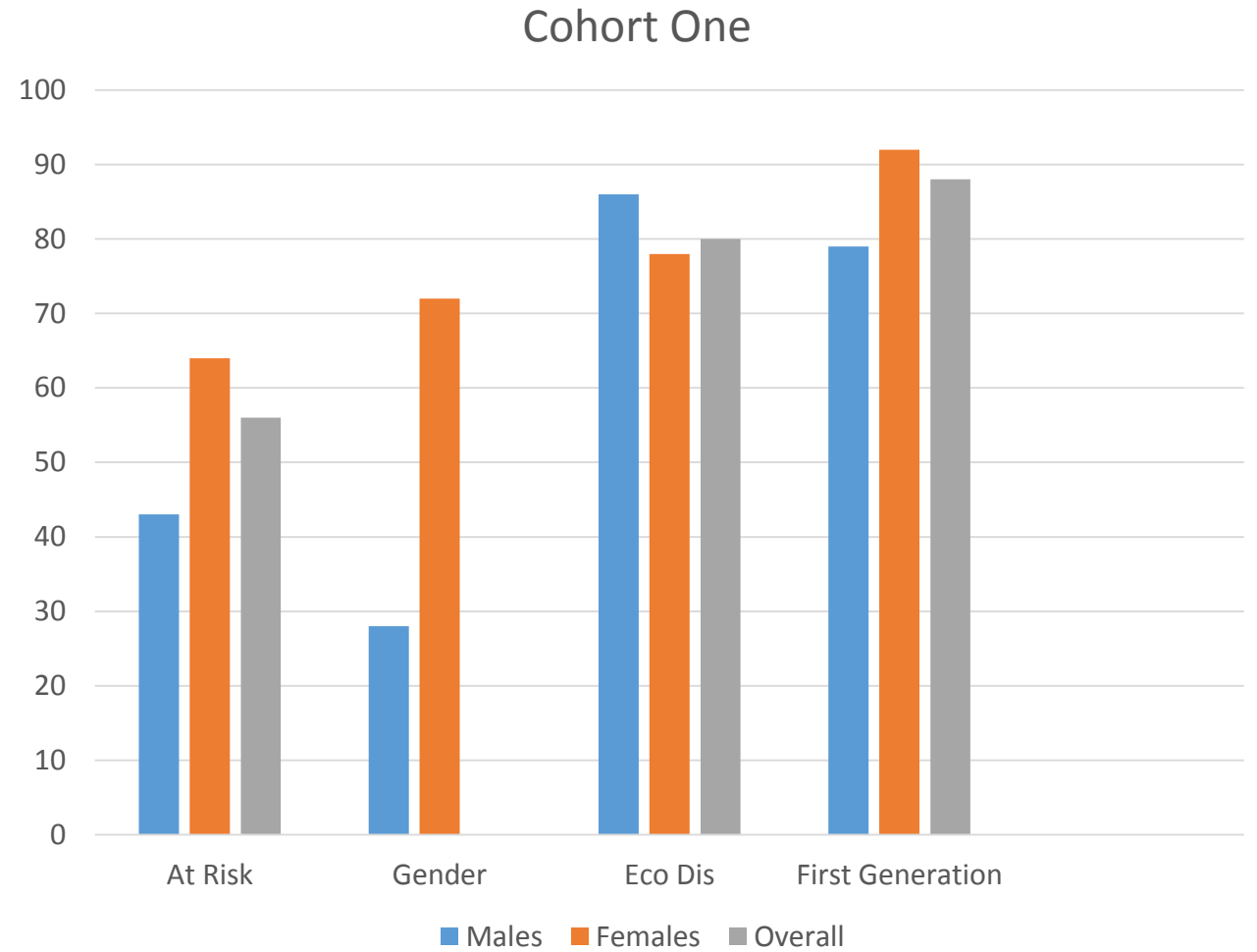
- 50 students
- 2016-17 sophomores



Demographics (cont.)

Cohort 1

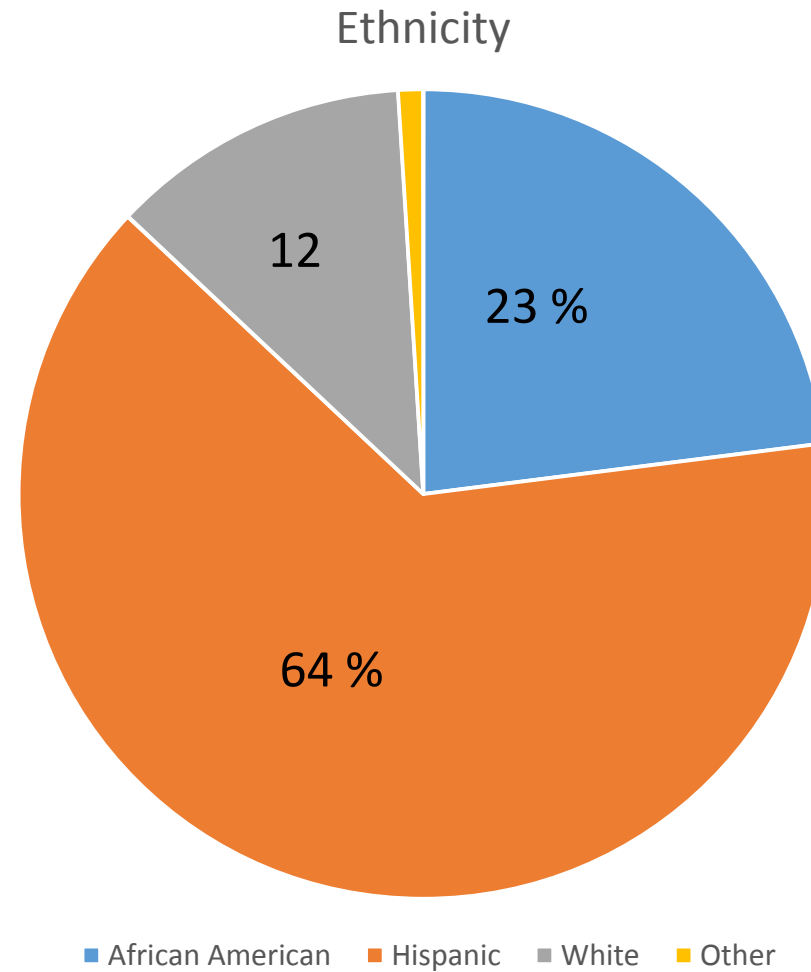
- 50 students
- 2016-17 sophomores



Demographics

Cohort 2

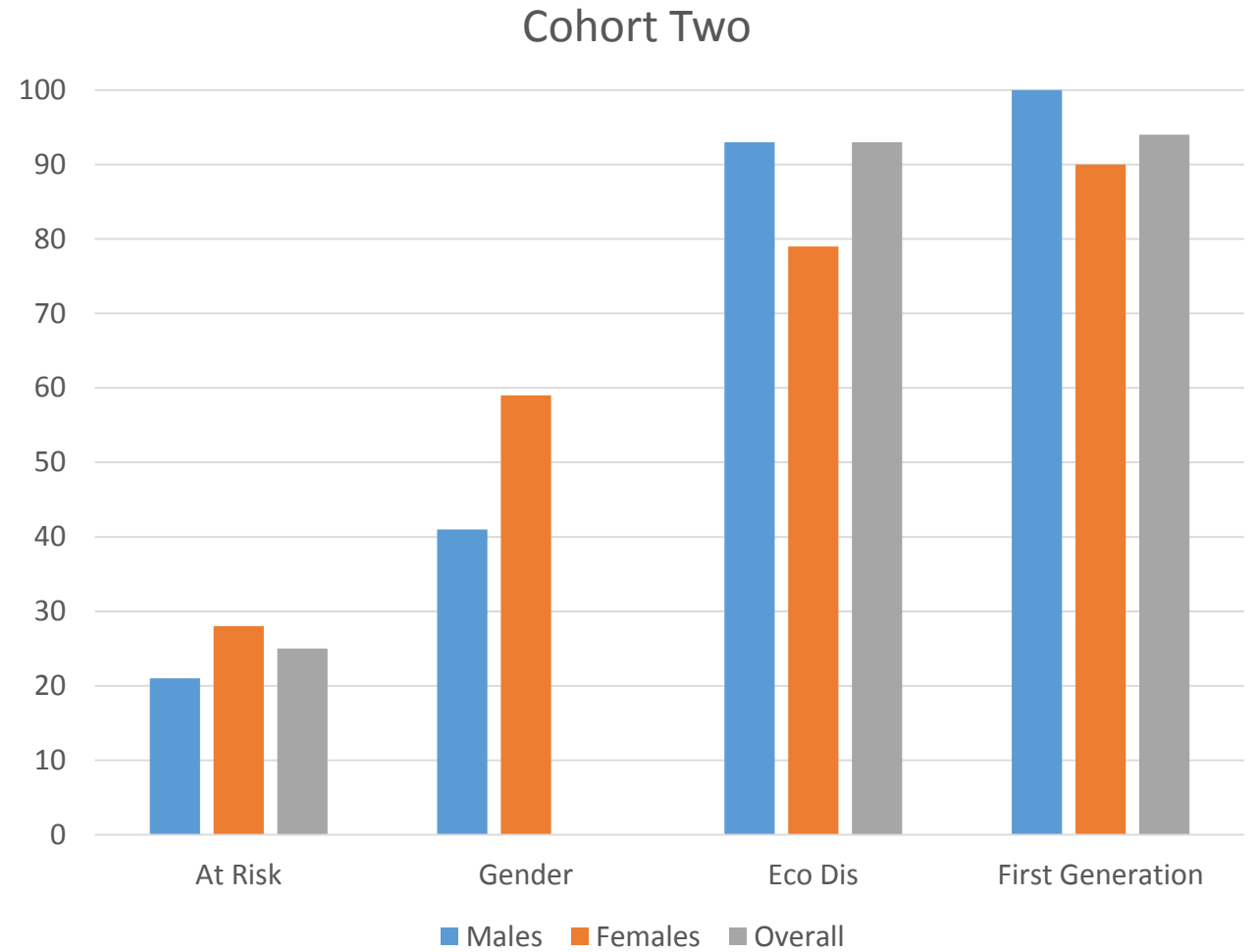
- 68 students
- 2016-17 freshmen



Demographics (cont.)

Cohort 2

- 68 students
- 2016-17 freshmen



College Enrollment

IHE Partners:

McLennan Community College

Texas State Technical College

Spring 2016

- 23 students enrolled in MCC's EDUC 1300
- 5 students enrolled in TSTC's TECH 1100

Fall Semester 2016

- ECHS Students will continue in HIST 1301 and 1302
- Art Appreciation or Music Appreciation and Professional Communications

Summer Bridge and TSI

IHE Partners:

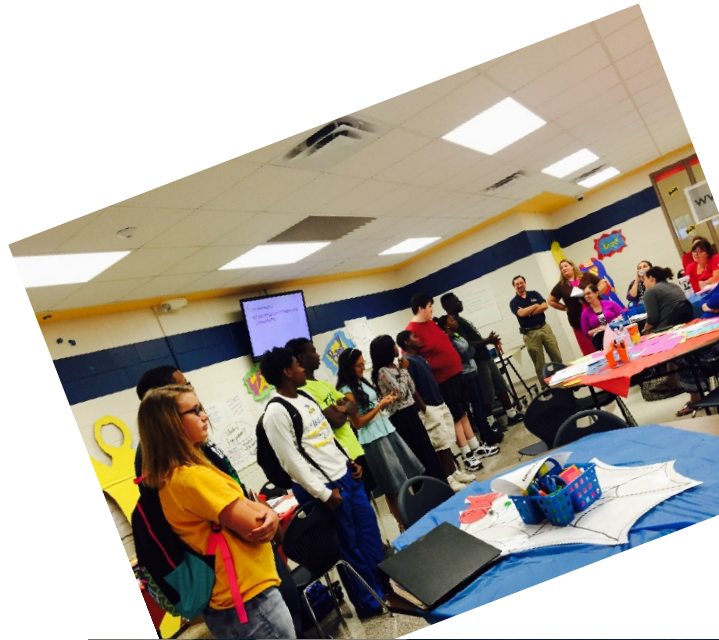
McLennan Community College

Texas State Technical College

Summer Bridge Components:

- Mathematics course
- Science course
- AVID and TSI prep
- Partner visits

Field Experiences



The Key to Making It Work

IHE Partners:

McLennan Community College

Texas State Technical College

Critical Players:

- IHE liaisons and partners
- Counselor
- Administration

Focus: Student Needs

- Academic
- CTE
- Emotional

The Key to Making It Work (cont.)

IHE Partners:

McLennan Community College

Texas State Technical College

How They Do It:

- IHE liaisons and partners
- Counselor
- Administration

Questions & Answers